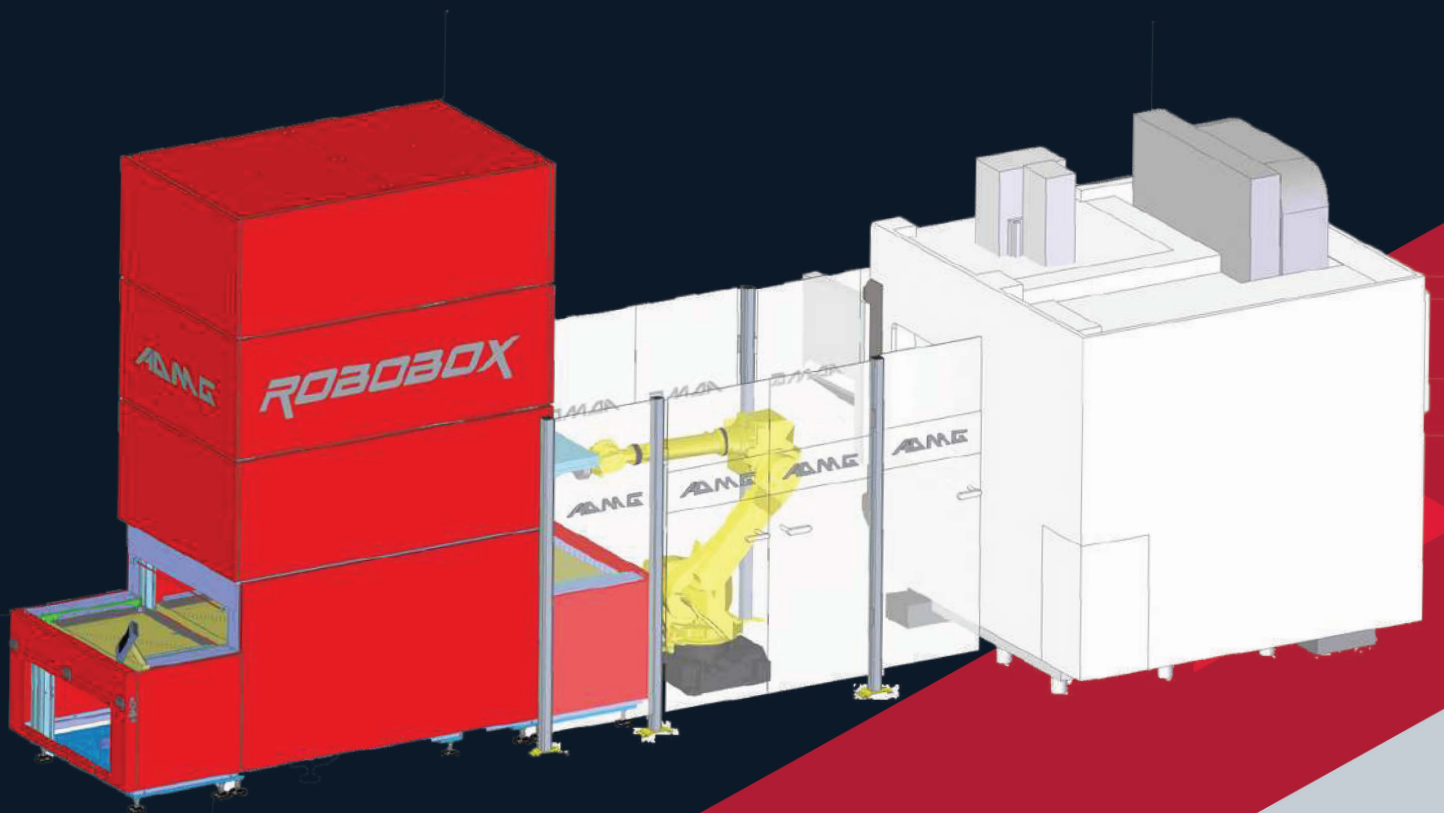


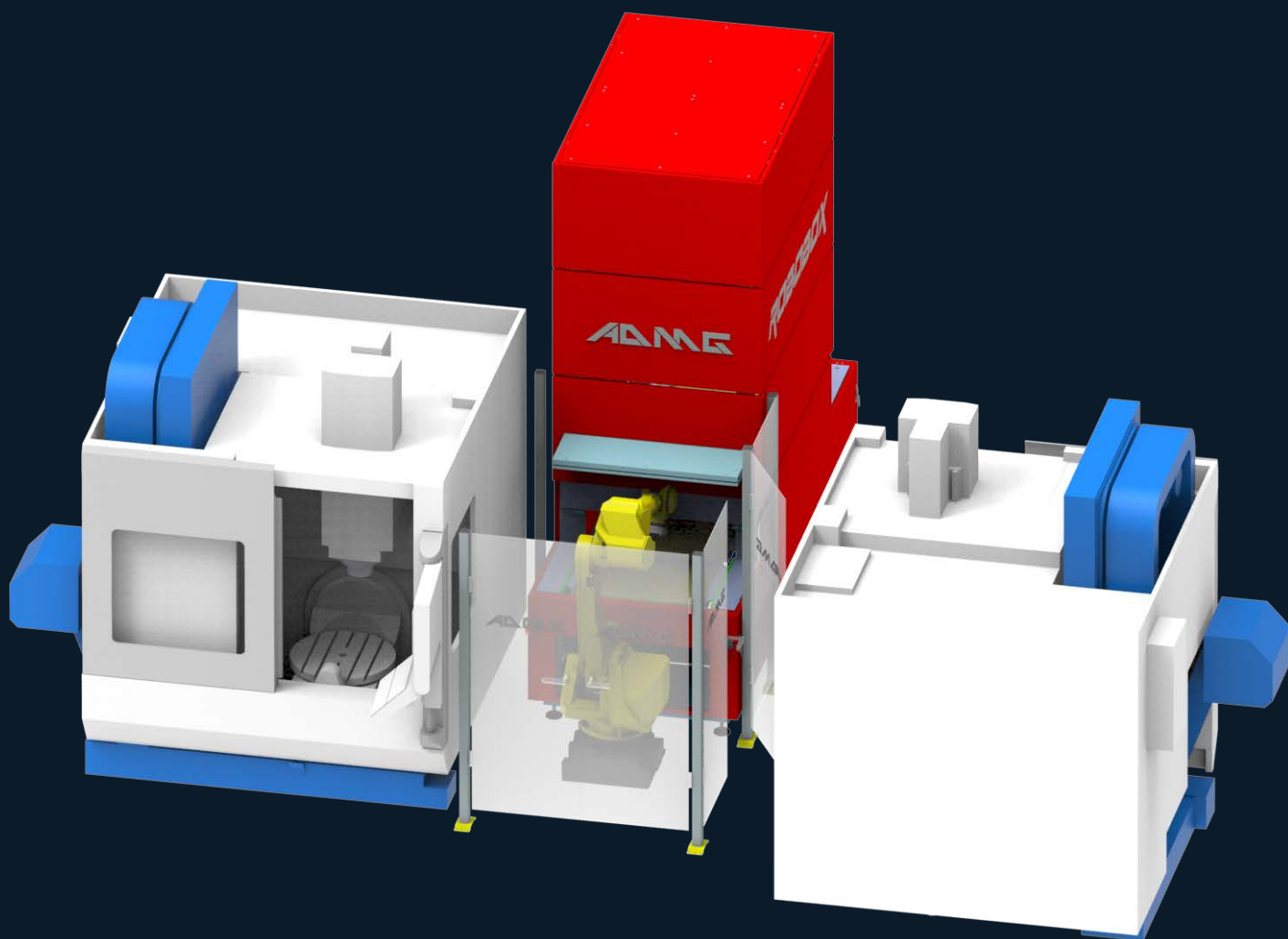
ROBOBOX



GENERAL总则

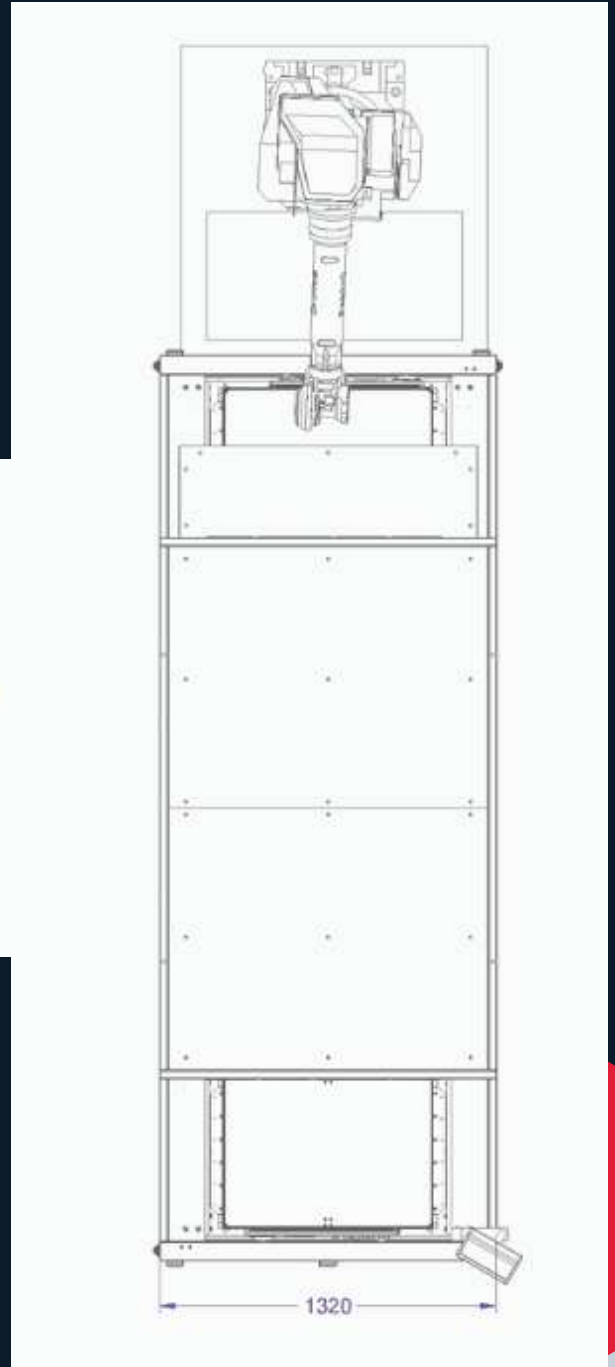
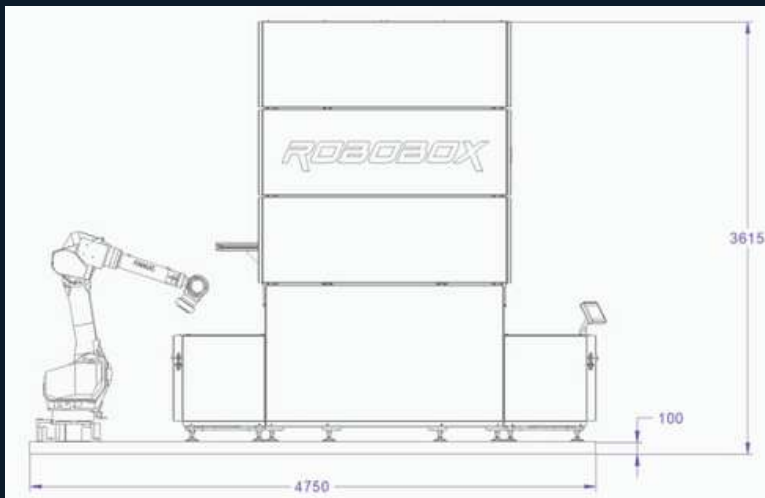
The Robobox system allows you to create a cell as below

Robobox系统允许您创建如下所示的单元：

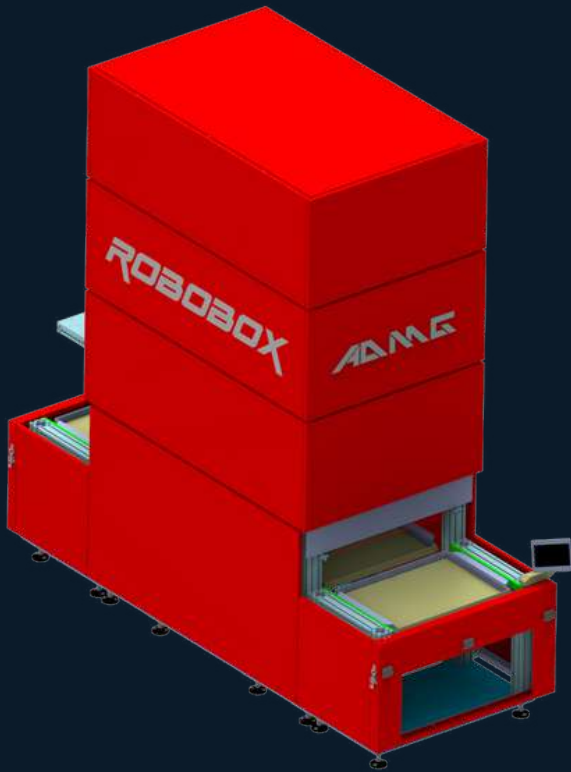


ROBOBOX DIMENSIONS

ROBOBOX 尺寸



VERTIBOX



Vertibox is an vertical automathic warehouse with maximum capacity of 56 trays. Safe working load of 256 kg each.

Maximum space requirement from tray is 300 mm in height. The tray's dimension is 600x800

Vertibox是一个垂直自动仓库，最大容量为56个托盘。每个托盘的安全工作负荷为256公斤。托盘的最大空间要求是高度300毫米。托盘的尺寸为600x800毫米。

ROBOBOX



It is a system of automation and storage stand-alone where everything is resting on a basic structure that makes easy and fast the moving where necessary.

它是一个独立的自动化和存储系统，一切都建立在一个基本结构上，使移动变得简单快捷。

ROBOBOX

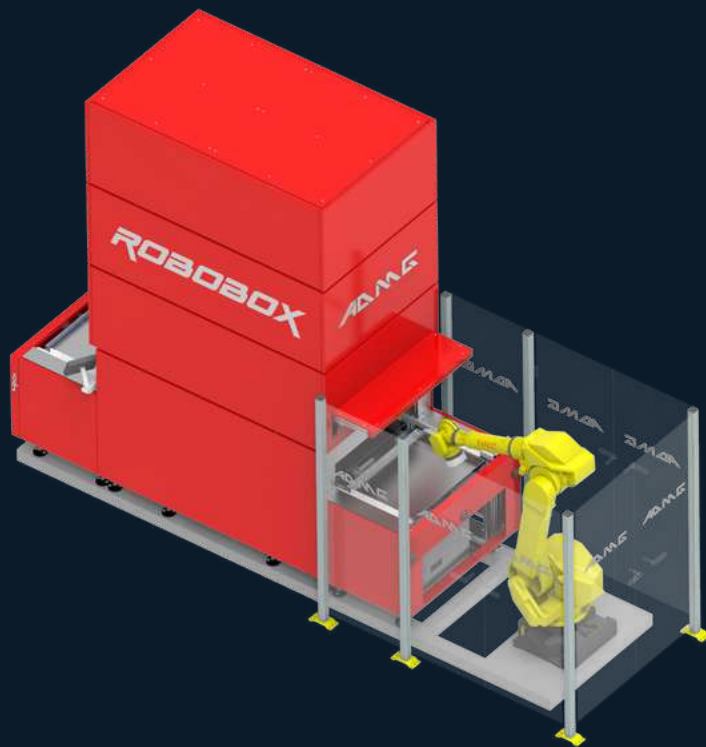


ROBOT FANUC

机器人FANUC

Robobox is equipped with a fanuc robot model M710iC/45M with 45 Kg of maximum load.

Robobox配备了型号为M710iC/45M的fanuc机器人，最大负载为45Kg。



PROTECTION SYSTEMS OF MODULAR SAFETY 模块化安全保护系统

The protections safety system of Robobox is modular. Depending on the need it is possible remove and reposition walls and/or doors.

The basic version comes with metal mesh, optional crystals.

Robobox的安全保护系统是模块化的。根据需要，可以拆除和重新安置墙壁和/或门。基础版本配备了金属网格，还可选择配备玻璃材质。

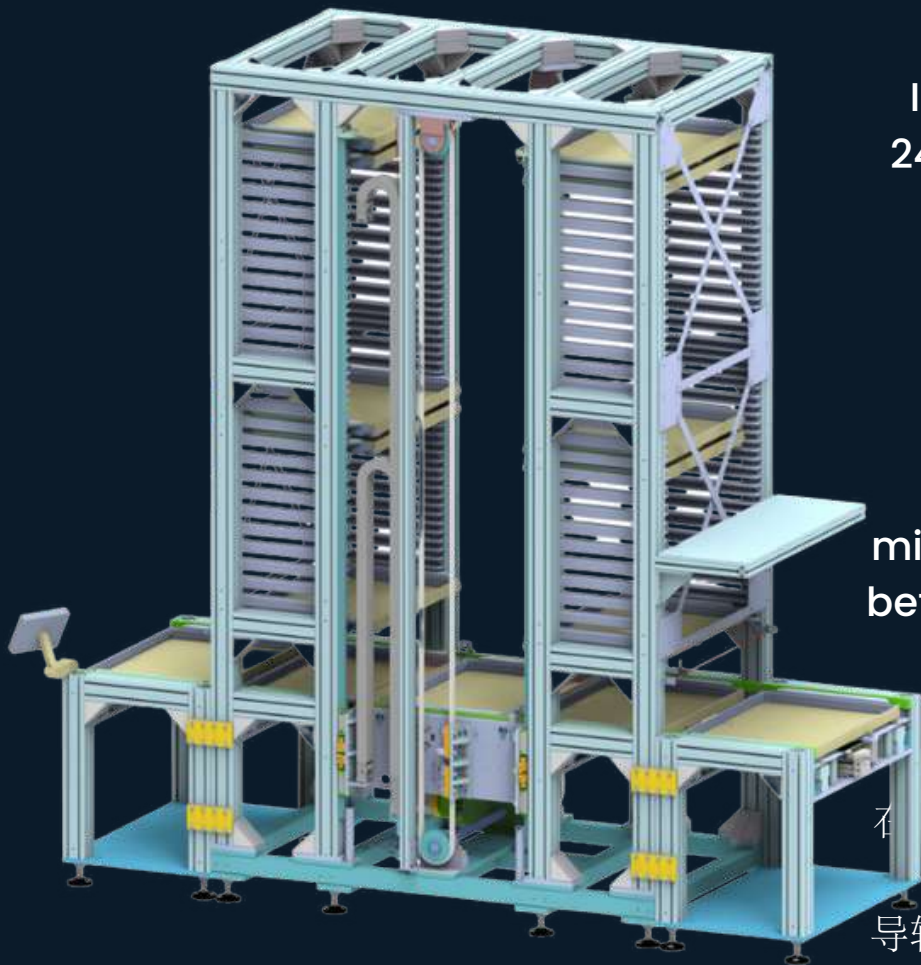
VERTIBOX

ALUMINIUM PROFILED STRUCTURE

铝型材结构

The structure of the Vertibox is made of aluminum and it's been designed to give rigidity and capacity, with particular attention to the weight itself

Vertibox的结构是由铝制成的，其设计着重于提供刚性和承载能力，同时特别注重整体重量。



TRAY GUIDES 托盘导轨

In the Vertibox are installed 240 guides with the function tray support.

The guides are made in steel with plastic inserts for better scrolling and to dampen the noise when on the move. The minimum distance of 65 mm between the same combined with the self-fulfillment system allows you to maximize space busy.

在 Vertibox 中安装了 240 个带有功能托盘支持的导轨。导轨由钢制成，带有塑料嵌件，可更好地滚动并抑制移动时的噪音。与自我实现系统相结合，相同之间的最小距离为 65 毫米，可让您最大限度地利用繁忙的空间。

VERTIBOX

SHUTTLE传送结构



The Vertibox is equipped with a mobile platform located in the central side.

The platform is used to move the tray at the top and at the bottom and it's equipped with a mechanism that allows the moving the tray towards right and left for their lateral positioning. Equipped with of 8 brake pads for increased security.

Vertibox在中心侧配备了一个移动平台。该平台用于在顶部和底部移动托盘，并配备了一个机构，允许左右移动托盘进行横向定位。配备了8个制动片，提高了安全性。



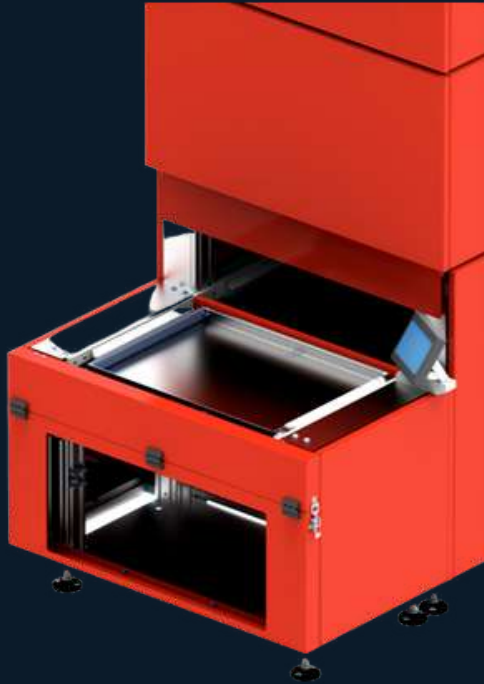
ROBOT SIDE BAY

机器人侧舱

The Vertibox is equipped with a bay robot side where the tray for handling from part of the robot.

Vertibox设有一个机器人工作区，用于机器人搬运托盘。

VERTIBOX



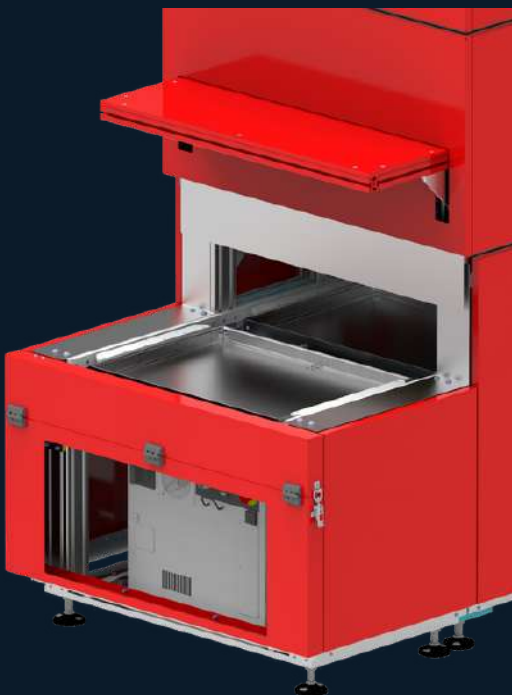
OPERATOR SIDE BAY

操作员侧托架

The Vertibox is equipped with a bay on the operator side where the operations of loading and unloading parts or equipment by of the operator.

The tray is easily removable to allow quick replacement.

Vertibox在操作员侧配备了一个托架，操作员可以在这里装载和卸载零件或设备。托盘易于拆卸，以便快速更换。



ELECTRICAL CABINET AND ROBOT COTROLLER

电气柜和机器人控制器

The electrical cabinet is positioned under the loading bay Robot in the back while the Robot controller is placed at the bottom of the back in so as to facilitate its use.

电动柜位于后部的装载区机器人下方，而机器人控制器则位于后部的底部，以方便其使用。

VERTIBOX

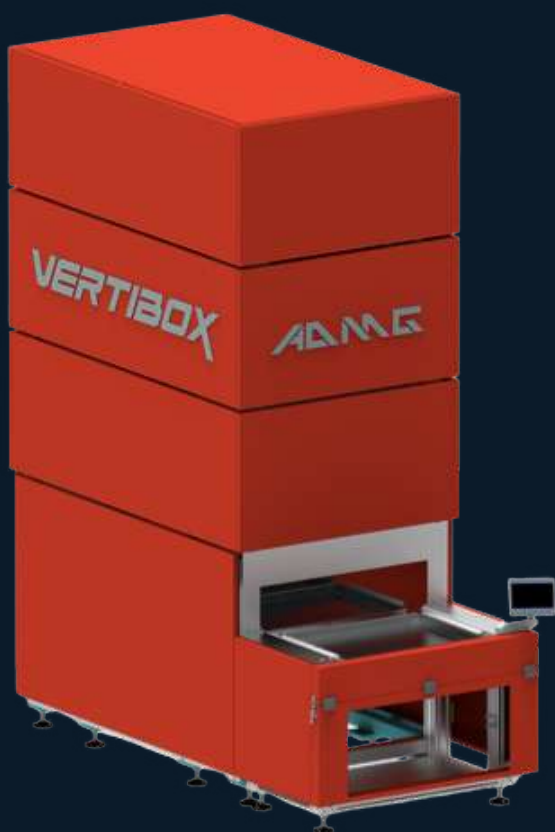


CONTROL PANEL

控制面板

The control panel located in the back is mounted on a telescopic arm in so you can be easily moved by the operator in the more optimal location.

位于背面的控制面板安装在伸缩臂上.因此,操作员可以很容易地将您移动到更优化的位置。



EXTERNAL COVERS

外部钣金

The Vertibox is equipped with external steel covers that guarantee the maximum safety and isolation.

Vertibox配备了外部钢制钣金,确保了最大程度的安全和隔离。

VERTIBOX

VERTIBOX CAPACITY

Vertibox容量

Vertibox has a maximum capacity of 56 trays at a distance minimum of 65 mm. The maximum space requirement accepted by the tray is 300 mm in height. Tray size 600 x 800 x 250 kg.

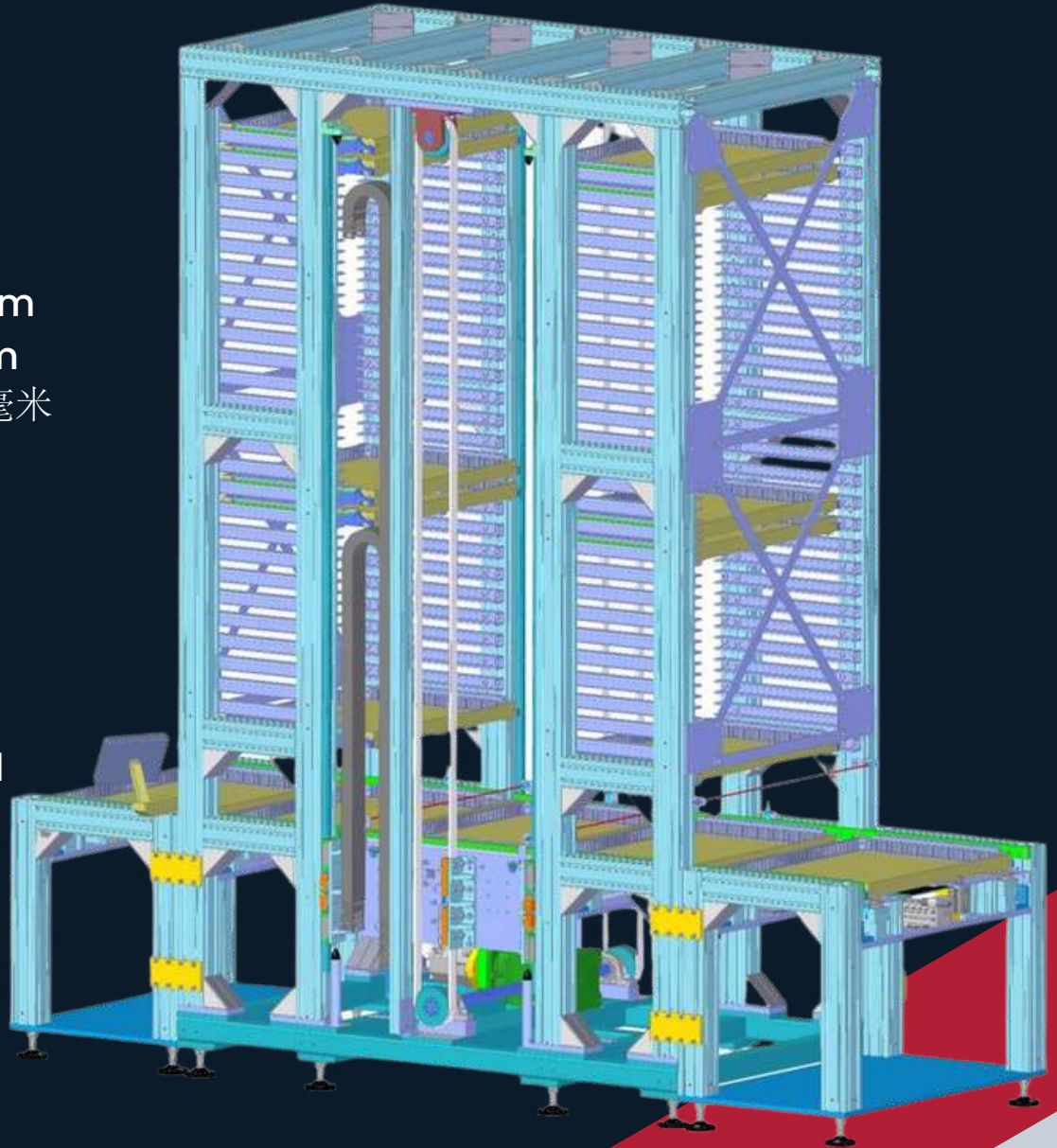
Vertibox的最大容量为56个托盘，最小间距为65毫米。托盘接受的最大空间要求为高度300毫米。托盘尺寸为600 x 400毫米，承重为250公斤



Minimum
distance from
trays 65mm
最小间距为65毫米



Maximum
height allowed
300 mm
允许的最大高度
300 mm



VERTIBOX

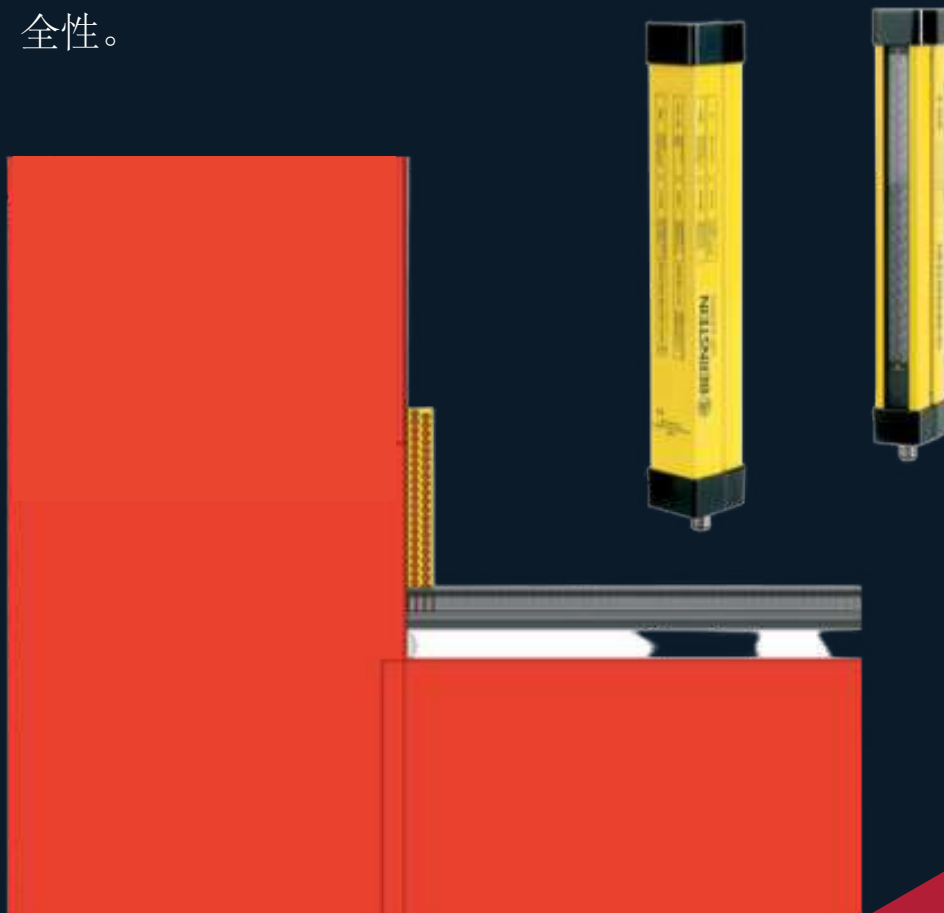
SELF-FULFILLMENT SYSTEM

自动填充系统

Vertibox is equipped with a self-filling system.

Thanks to the electronic measuring system, the height is detected of the tray and its contents at the entrance and through a special algorithm is determined the position where the tray will be parked in order to maximize the space occupied and avoid damage to the tray in case of exceeding the maximum permissible height.

Vertibox通过其自动填充系统，在托盘及其内容物进入时利用电子测量系统来检测其高度。然后，系统会使用一个特殊的算法确定托盘在Vertibox内的停放位置，这样做是为了最大限度地利用可用空间，并确保在托盘及其内容物的高度超过最大允许值时能够避免对托盘的损害。这种方式提高了存储效率，并且通过精确控制托盘位置来保护托盘不被损坏，从而确保了操作的安全性。

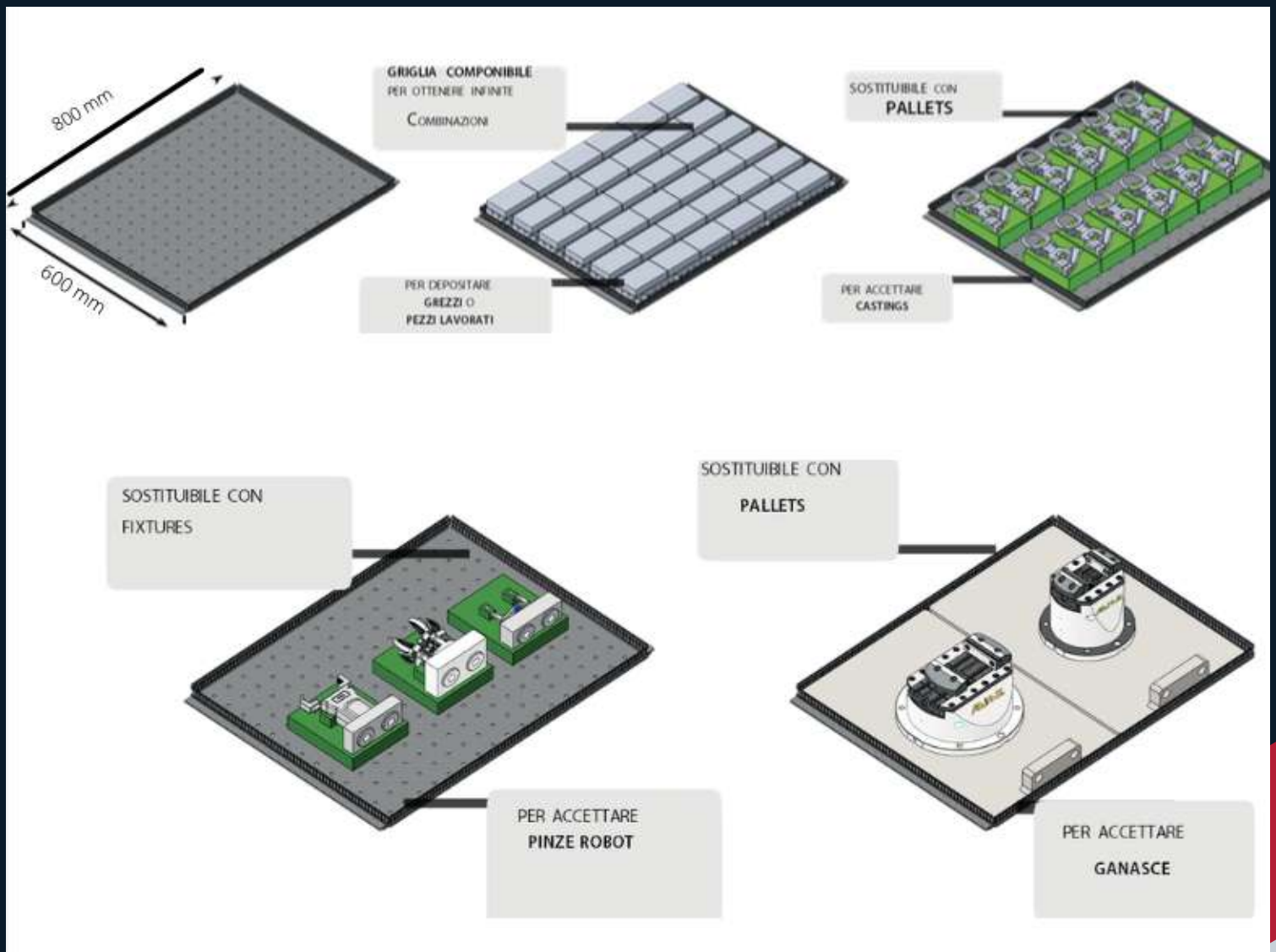


TRAYS

托盘

Vertibox can hold a maximum of 56 trays whose size is 800 mm x 600 mm and the maximum capacity is 250 kg each. The trays have been designed so that they can be configured modularly to accept any type of material.

Vertibox 最多可容纳 56 个托盘，尺寸为 800 mm x 600 mm，每个托盘的最大容量为 250 kg。托盘经过精心设计，可以模块化配置以接受任何类型的材料。





ROBOBOX

INDUSTRY 4.0

工业4.0

Robobox is a tool of interconnection between machines, warehouse, robot and office management. The ADMG Software designed for calculation of production, is managed by software management. Such interconnection is today, to all intents and purposes, an industry 4.0 system.

Robobox是机器、仓库、机器人和办公室管理之间的互联工具。ADMG软件设计用于生产计算，由软件管理管理。如今，无论出于何种意图和目的，这种互连都是一个工业4.0系统。



ROBOBOX

OPTIONAL 选配

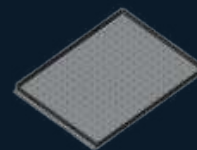


**PROTECTION SYSTEM
KNITTED SAFETY
METALLIC (INCLUDED) OR
GLASS (OPTIONAL)**
安全金属编织防护系统 (包含) 或玻璃 (可选)



**FANUC ROBOTS
M-700iC/45 KG
(INCLUDED) Or FANUC
ROBOTS M-700iC/70
KG (OPTIONAL)**

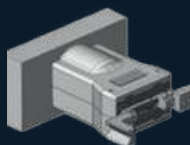
FANUC ROBOTS
M-700iC/45 KG (随附) 或
FANUC ROBOTS
M-700iC/70 KG (可选)



**TRAYS
MODULAR
STANDARD
(OPTIONAL)**
托盘模块化
标准(可选)



**SUPPORTS AND
PILES FOR SYSTEM
SAFETY (8 CAD
INCLUDED)**
系统安全的支架和桩
(包括8个CAD)



**ROBOT TOOLS
EQUIPMENT
(OPTIONAL)**
机器人工具设备
(可选)



**METALSEPARATOR
FOR MODULAR
TRAYS (OPTIONAL)**
用于模块化托盘的金
属分离器 (可选)



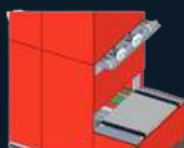
**GEA VISE
230M
(OPTIONAL)**
虎钳GEA
230M (可选)



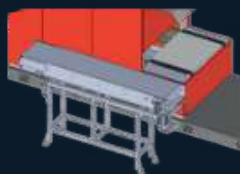
**GEA VISE
230P
(OPTIONAL)**
虎钳GEA
230P (可选)



**GEA VISE
160M
(OPTIONAL)**
虎钳GEA
160M (可选)



**SHELF FOR
DEPOSIT
ROBOT GRIPPERS
(OPTIONAL)**
存放机器人夹具的
货架 (可选)



**LATERAL
UNLOADING
MAGNETIC TAPE
(OPTIONAL)**
侧向卸载磁带 (可
选)



**PALLETS FOR
MODULAR
TRAYS
(OPTIONAL)**
模块化托盘托
盘 (可选)

ROBOBOX

***When the world asks to
change, there are
those who still have
the courage to do so!***

**当世界要求改变时，仍有人
有勇气这样做！**

CONTACT US
联系我们

Via C. Turriceni, 9
Cazzago San Martino, Brescia

info@admgsrl.it

ADMG
Technology